

CHRISTOPHER GLANVILLE

RICHMOND

AND

THE THAMES

A PAINTER'S VIEW

I established my gallery in Kew Road, Richmond in 1980, my period of interest then firmly being British art from 1850 to 1950. When possible I would show local subjects in various mediums, being well aware of their popularity amongst my clients. But I showed barely any works by living artists, despite knowing of the continuing appeal of Richmond, and particularly the Thames, as a painting-ground for contemporary painters. Recently I have revised this policy, in substantial part through encountering the work of Christopher Glanville, whose paintings of Richmond I am very happy to have had the opportunity to show and sell over the last 18 months. I initially met Christopher when researching an oil from the 1950s by his father, the marine artist Roy Glanville, and Christopher's helpful response to my enquiry was to send me a catalogue he had compiled illustrating both his late father's work and his own, which revealed to me what an accomplished painter Christopher is. That initial contact led to Christopher's consignment to the gallery of a group of his father's marine paintings, and we collaborated on a successful retrospective exhibition in late 2015. I asked Christopher whether he would also consign a number of his own paintings of the locality to the gallery, and he agreed. In consequence his oils of Richmond's riverside in different seasons, his impressionistic depictions of Pembroke Lodge in Richmond Park, and of The Terrace on Richmond Hill, have been able to be much admired by gallery visitors, with several finding appreciative homes with my clients.

Roland Goslett

CHRISTOPHER GLANVILLE RWA

CG was born in London in 1948 & grew up in an atmosphere dedicated to painting. His father, Roy Glanville RBA, RSMA (1914-65) was a distinguished marine artist & De Lazlo Medal winner. RG's paintings of the Thames at Cheyne Walk & Chiswick were so evocative as to bring about a lasting attraction to the atmospheres around moorings & the activities on the river.

CG went on to study at the Byam Shaw School of Painting & Drawing, & at the Royal Academy Schools in Piccadilly. Elected to the Royal West of England Academy in 1980, while Vice President of the Academy he co-curated the first London Exhibition of the RWA. His work has been widely exhibited in London, at RA Summer Exhibitions, at the Mall Galleries (NEAC), WH Patterson, and Frost & Reed. In addition his works are regularly on display at the RWA Galleries in Bristol, Jerram Gallery, Sherborne; Mandell's Gallery in Norwich & Roland Goslett Gallery, Richmond. Publications include Buckman's Dictionary of British Artists, RA Exhibitors & Who's Who in Art. Online his work can be viewed on the sites of the Bridgeman Art Library & the BBC/ArtUK website developed in conjunction with the Public Catalogue Foundation project.

The work illustrated in this 'sketchbook' is a selection from drawings & paintings of subjects near to his home & studio of the last three decades of favourite places in Richmond Park & the stretch of river bounded by the bridges at Hampton Court & Richmond.







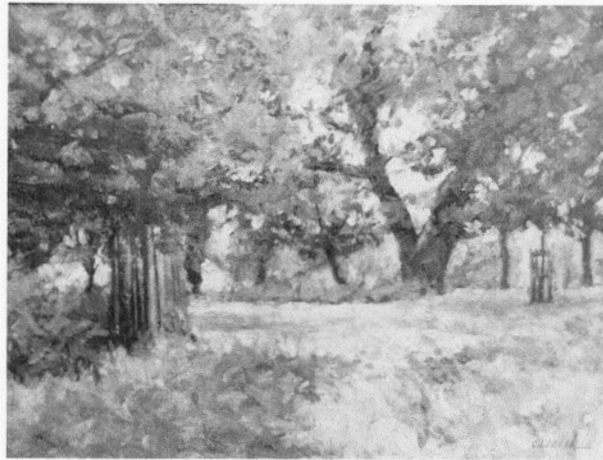
THE TERRACE

Oil on canvas 40x50cm

Exhibited Roland Goslett Gallery, Richmond

The view from here is commanding, but the Terrace itself has its own appeal. Light filtering through the foliage, with a sense of reflection which appears to come up the slope from the river below, has generated several paintings.





RICHMOND PARK

Oil on panel 18x25cm

Exhibited Royal Academy Summer Exhibition

Private collection

This plein air oil study was painted using a purpose made pochade box on an August evening in the Royal Park



CLAYVILLE



WINTER WALKERS

Oil on canvas 60x75cm

Exhibited Roland Goslett Gallery, Richmond

Private collection

Throughout the year walkers pass the White Cross & its surroundings, summoned to the riverbank





RIVERSIDE MOORINGS

Oil on canvas 30x40cm

Private collection

The dark silhouettes of these pilot boats and their crowded ramshackle moorings near the boathouses are as compelling a subject as the elegance of the stretch of riverside closer to the bridge downstream





NEAR HAM GATE

Oil on panel 25x30cm

An on-site study of emerging bracken in the diffused light of late spring





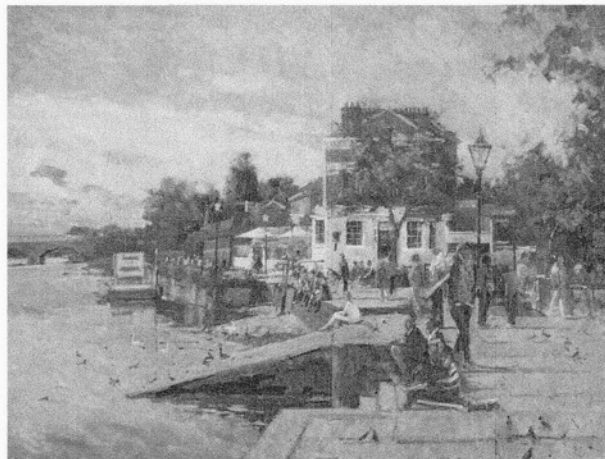
AUTUMN LIGHT, PEMBROKE LODGE

Exhibited Roland Goslett Gallery, Richmond

Private collection

Based on a small study, the light of early autumn as the foliage begins to change colour against strong blue skies was the principle subject of this studio canvas, with figures moving in & out of shadows cast by the architectural setting





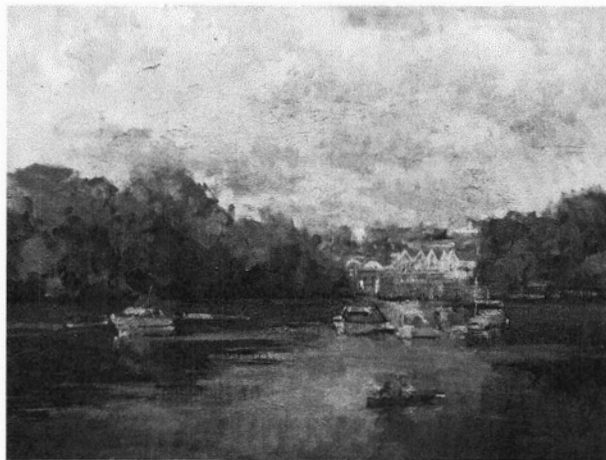
SUMMER BY THE THAMES, RICHMOND

Oil on canvas 60x75cm

Exhibited Roland Goslett Gallery, Richmond

A favourite location for many walkers to stop between Richmond Bridge & The White Cross, while others continue on their way to Kew or upstream towards Ham House and Teddington Lock





THE THAMES AT PETERSHAM

Oil on canvas 40x50cm

Exhibited Roland Goslett Gallery, Richmond

Walking from Ham House by the meadows at Petersham, the town appears between the trees, giving the impression of an unchanging atmosphere which has been carefully maintained on this stretch of the river





SNOW SHADOWS
Oil on canvas 60x75cm

This studio oil developed from a watercolour sketch on the ridge outside the grounds of Pembroke Lodge





RICHMOND RIVERSIDE

Oil on canvas 30x40cm

Exhibited Roland Goslett Gallery, Richmond

Private collection

The foreshortening of the riverbank & the two rowing boats on the ramp form the principle subject of this work





BRIGHT LIGHT AT PEMBROKE LODGE

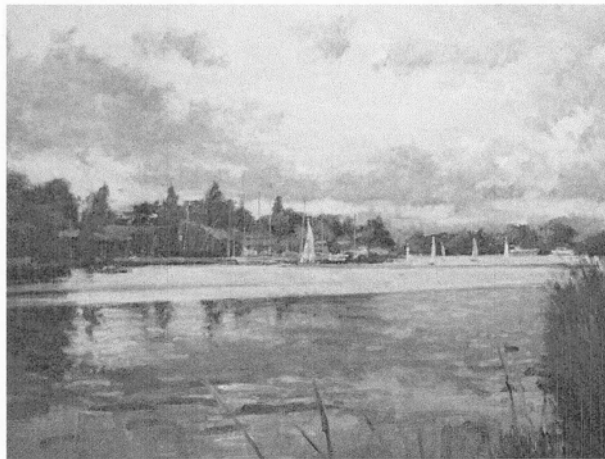
Oil on canvas 30x40cm

Exhibited Alresford Gallery

Private collection

The white wall of the Lodge presents a dark mass against the sky casting strong shadows across the terrace





EVENING, TEDDINGTON

Oil on canvas 50x75cm

Exhibited Roland Goslett Gallery, Richmond

Approaching dusk, with dinghies returning to the Tamesis & Ariel Clubs, viewed from the Surrey bank





WINTER SUN

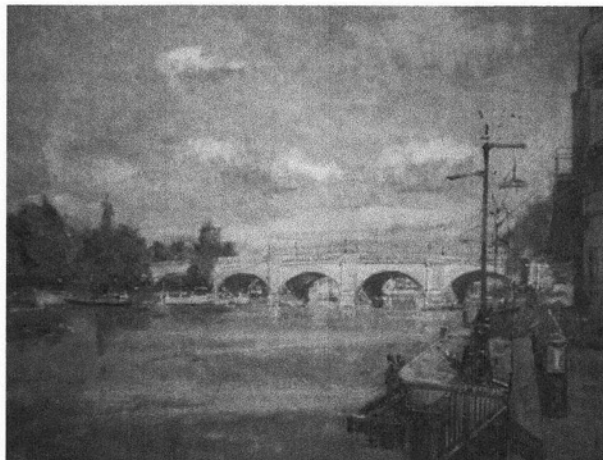
Oil on canvas 75x90cm

Exhibited Royal West of England Academy, Bristol

Private collection

In bright light figures are absorbed against the mass of the Lodge & tracery of trees casting their shadows





KINGSTON BRIDGE FROM CHARTER QUAY

Oil on canvas 40x50cm

Kingston Museum

This view of the arches spanning the river was painted following the bridge widening & completion of Charter Quay





REFLECTIONS AT KINGSTON

Oil on canvas 40x50cm

Strong directional reflections in the river obscure the fast moving rowers who become part of the surface of the water in contrast to the leisurely tempo of Enterprise dinghies passing near moorings on the far bank





MOORINGS, HAMPTON COURT

Oil on canvas 40x50cm

Exhibited Frost & Reed, London

Private collection

The arrangement of these boats in their moorings present a challenge for anyone concerned with the precision of their form, while their colour & location on the unmade beach produce a relaxation reflected across the water



